

# USB

## Camera

### 01/ Turn on

The camera no built-in battery,when use must be connected the power source(phone charger plug or power bank),it needs 5V/1A to activate.Blue light remains on and camera is in stand-by mode.

### 02/ Turn off:

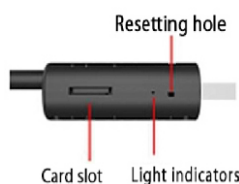
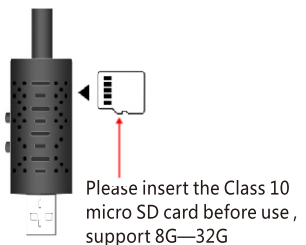
when in stand-by mode, long press the motion detection key for 2 second to turn off.

### 03/ Key indicators

Triangle key: recording  
Circular key: motion detection recording

### 04/ Continuous recording

When in stand-by mode, press recording key (blue lights will flash 3 times and go off)camera starts to record. Press the recording key again , (blue light remains on) the camera will save the video and re-enter stand-by mode.



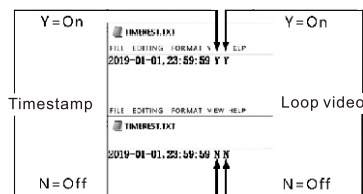
### 05/ Motion detection

During stand-by mode, press motion detection key (red lights flashes 3 times and then go off) the camera will enter motion detection mode. When an object moves in front of the camera, the camera will automatically record for 1 minute and then re-enter arming stage; when an object moves in front of the camera again, the camera will re-enter recording mode. The camera will repeat this way. Press the motion detection key again (Blue lights remain on) the camera will re-enter stand-by mode.

### 06/ Time modification

When turning on the camera and begin to record, a file name "TIMEREST.TXT" will automatically form in the TF card. Open the file and modify the time to current time and save the file. Safely eject the disk and record again. The recording time will be automatically updated. (The system default setting does not display the time. If you want time to be displayed on the recording, you are required to set it before use.) You can also insert the TF card into the card reader and connect the card reader to the PC to set the date and time. Change the date and time without changing the format.

VIDEO  
TIMEREST.TXT



1. The first letter represents whether the recording displays the time and date. ( Y means yes and N means no)
2. The second letter represents whether loop recording is on. ( Y means yes and N means no)

### 07/ Loop recording

If Loop video was activated, when the memory card was full, the latest video files will automatically cover the earliest video files. If Loop video was deactivated, when the memory card was full, the video recording will automatically stop.

### 08/ Video reading

- A. You can take out the TF card and read it through a card reader.
- B. Or you can connect the camera to the computer to activate card reading.

### 09/ Resetting

If the camera appears to be malfunctioning or no response to any kind of operation, resetting can be done to the camera. Resetting method: use a toothpick to poke the resetting hole once and wait for the indicator light to go off to finish the resetting process.

### 10/ Technical Specifications

Supported TF Card capacity	8G/16G/32G
Memory footprint	approx. 10G/hour
Video Format	AVI
Video frequency	30fps
Recording resolution	1920*1080P
Product weight	approx. 21g
Product dimension	approx. 16*2.7*1.5cm

### • Notice

**A.** Before use, TF (microSD) card must be inserted to the camera. The camera can't record without TF card. ( recommended to use C10 TF card).

**B.** Format the TF (microSD) card to FAT32 before use. Doing this, however, will remove all data from the card. Make sure to back up any data before formatting.

**C.** Aimed the camera at the recording object, making sure the camera is at least 50 cm away from the recording object to get a correct, natural colored, clear scenery, stable recording.

**D.** The camera takes about 10G memory per hour, maximum supports 32G memory card.

**E.** The power consumption for the camera is approx. 150 mAh per hour.



**Note:** When using the camera, it should maintain a certain space with other objects, let the camera be in use in ventilation areas.

When the camera is in use or in charge, it is forbidden to use any object to cover the outer casing and the surrounding heat release holes. Blocking the vents can cause the device to overheat. If the camera is damaged caused by this reason or other serious consequences, the seller is not responsible or bear any legal consequences.

**Use occasion:** please abide the national laws and regulation, do not use this product for illegal purpose, or all consequence will be in your responsibility.

**Working temperature:** 0-45°C, to prolong battery life, the camera best be used in room temperature. any object blocking the outer covers or its ventilation holes are prohibited.

**Working humidity:** 20%—80%, please do not use this product in a humid working environment. The product does not have waterproof features. Other notice : This product is a precision electronic product, do not let it be in contact with strong impact or vibration; Do not use this product in strong magnetic or electronic field or near flammable and explosive products.