

USER MANUAL

XD WIFI



Night vision light

HD lens

TF card slot

Indicator

USB port

Reset hole



Tips

- 1. Quick guide of Setting, please read “ III. Quick Settings.”.
- 2. It is recommended to read this manual carefully before using, especially the red characters.

I.Features

1. Monitoring

You can view real-time monitoring while you are away.

2.IR-CUT

The smart IR–CUT function will automatically sense changes in the surrounding environment and turn on/off night vision .No need and no support for manual settings.

3.Alarm

When a moving object is detected within the recording range, the camera will start recording and send an alarm through the APP on the mobile device.

1

4.TF Storage

If you insert a TF card, the camera will automatically save the surveillance video; 8GB memory allows two days of recording, and 128GB memory allows up to a month of recording.

5. Loop Recording

When the memory is full, the latest recording file will automatically overwrite the oldest.

6. Cloud Storage

If you worry about your camera being stolen or the files in the TF card being damaged, you can use paid cloud storage (provided and charged by a third party).

7.AI Body Shape Recognition

The alarm is activated only when there is human activity to facility alarming accuracy (Reducing false alarm caused by wind, car, animal, etc. Provided and charged by a third party).

2

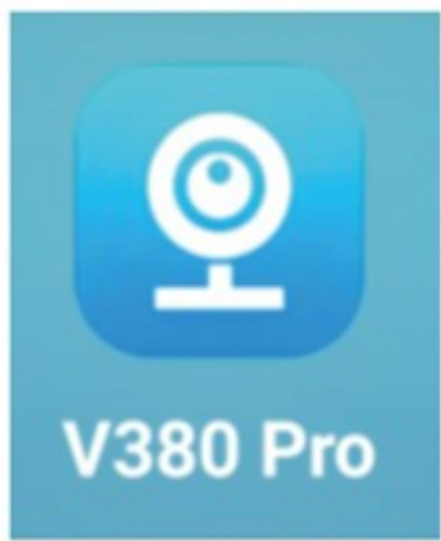
II.Read Before Use

- 1. You do not need to insert a TF card to use, but the video cannot be saved in the camera or played back, if you want to store surveillance video, you can buy cloud storage or insert a TF card.
- 2. The camera supports 8-128G C10 TF card, please format the TF card before use. (* This operation will delete all the data inside the TF card)
- 3. To make the camera the smallest, the camera does not have a built-in battery, please connect it to a power bank or household power supply before using. Normal use requires 5V/1A voltage, maximum supports 5V/2A.
- 4. The camera only supports 2.4G Wi-Fi connection, not supports 5G Wi-Fi.
- 5.To ensure good signal transmission, during the setup process camera should be close to the mobile phone and wireless router.

3

III. Quick Settings (no need QR code)

1. Two ways to download the V380Pro APP



Search from the APP store: “V380 Pro”



Scan the QR code

When installing the APP, need to authorize related permissions, especially:

1. Allow Location Access: Faster matching server to achieve a faster and more stable connection.

2. Local Network : phone can be based on WIFI and the camera's hotspot connection to quickly add the camera account.

* If the hotspot has been connected, refresh and no device found, usually because no turned on the permission.

5

2.Short—range mode

(point-to-point connection of camera and mobile phone)

Connect Power Supply



Connect the power supply, and wait about one minute until the camera indicator turns red.

* If there are exceptions in this process, please reset the camera.

Phone Settings



Wi-Fi network "MV43245412" unable to access Internet

This screen appears, please tap

Do not use Continue to use

Unlock your phone -- Tap "Settings" -- "WLAN"

① Find the Wi-Fi signal beginning with MV and tap it.

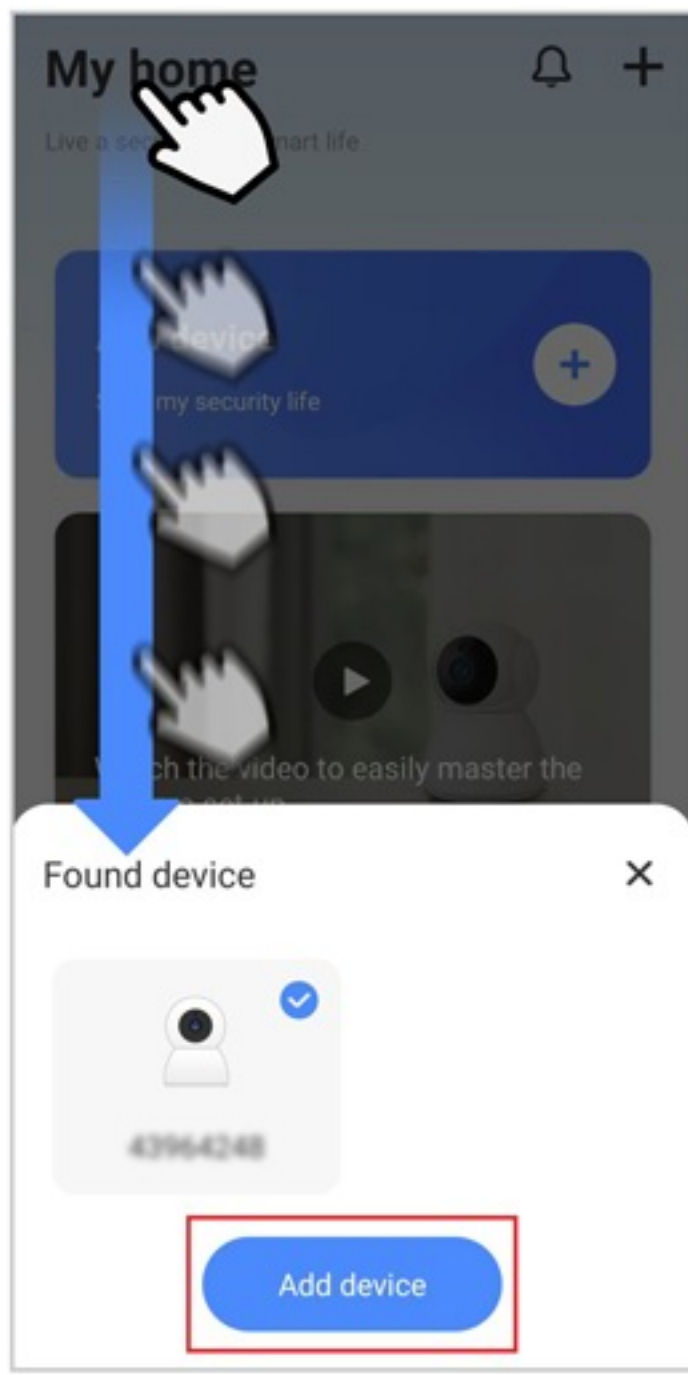
② And wait until the Wi-Fi symbol appears

Open APP V380Pro

After login, swipe down from the top of interface to refresh, until found the device.

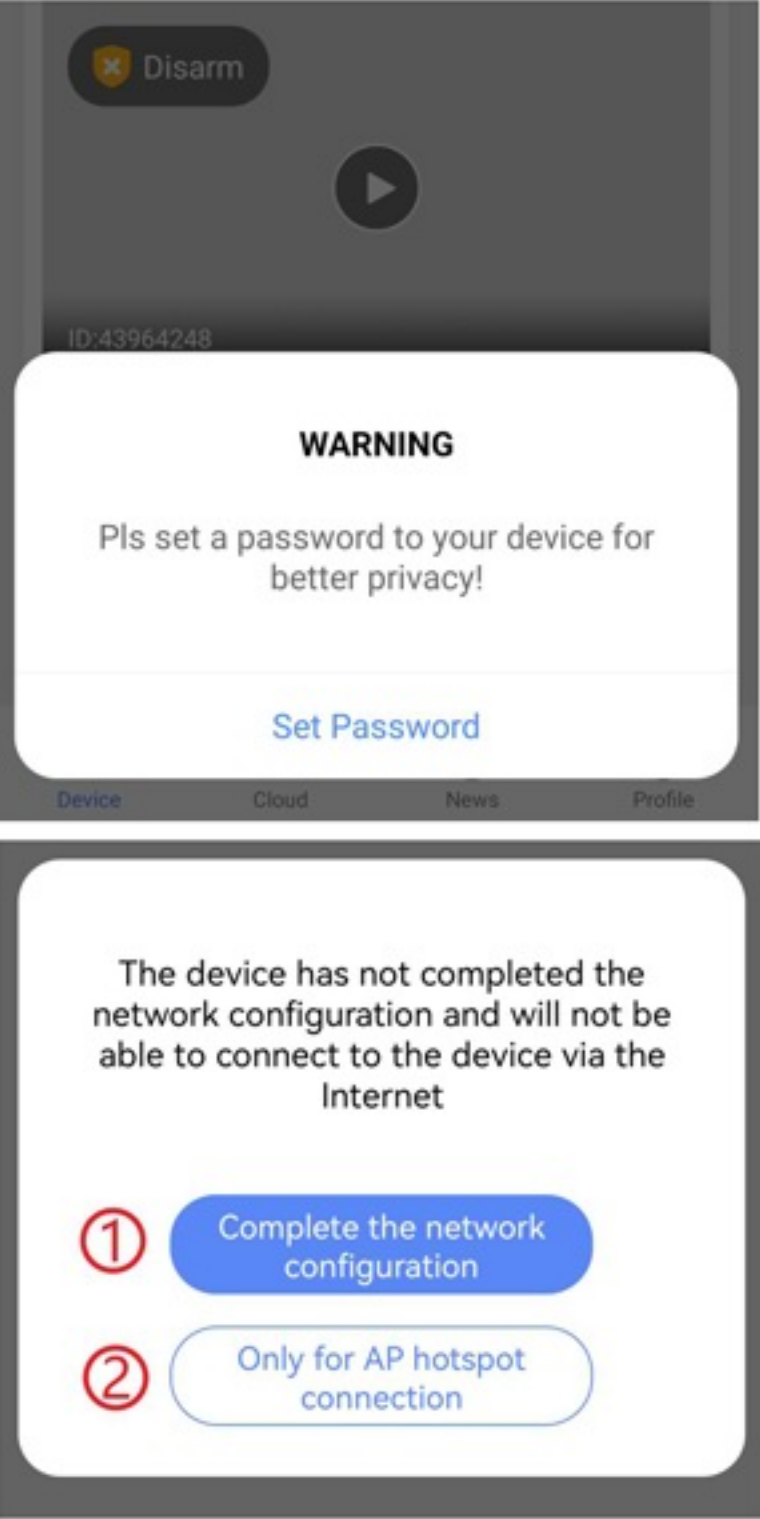
* If there are exceptions, please check the previous steps.

6



User name and password

This user name and password is different from V380 APP account, because APP can add unlimited cameras, each camera should have separate user name and password.



- ① See the page8: Tap“ WiFi station mode”
- ② Point-to-point connection done.

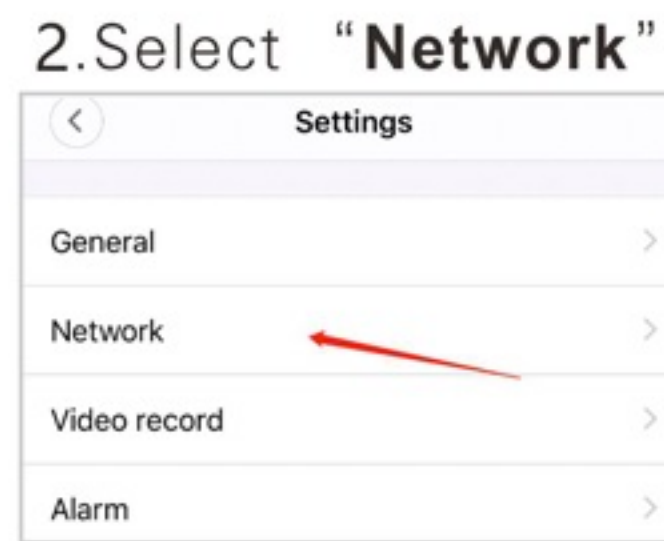
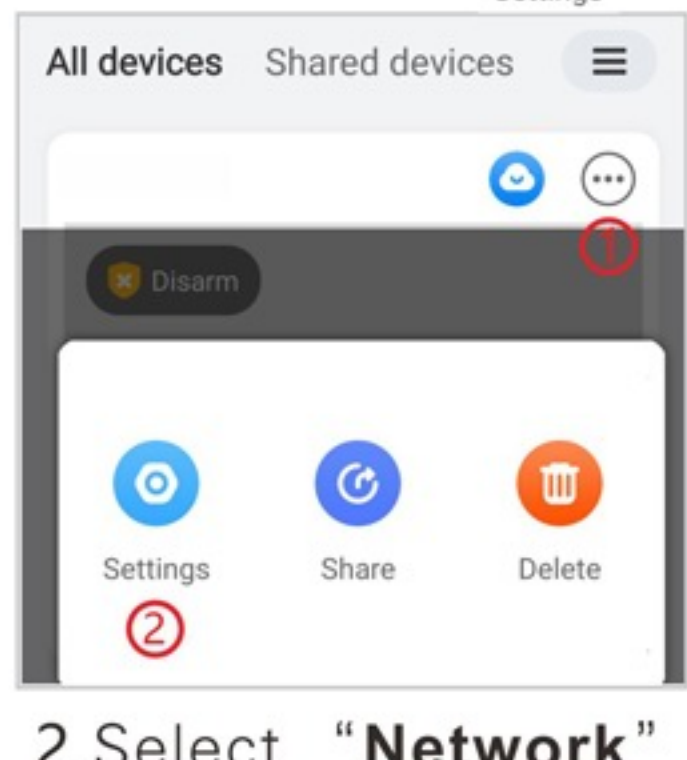
7

3.Remote mode

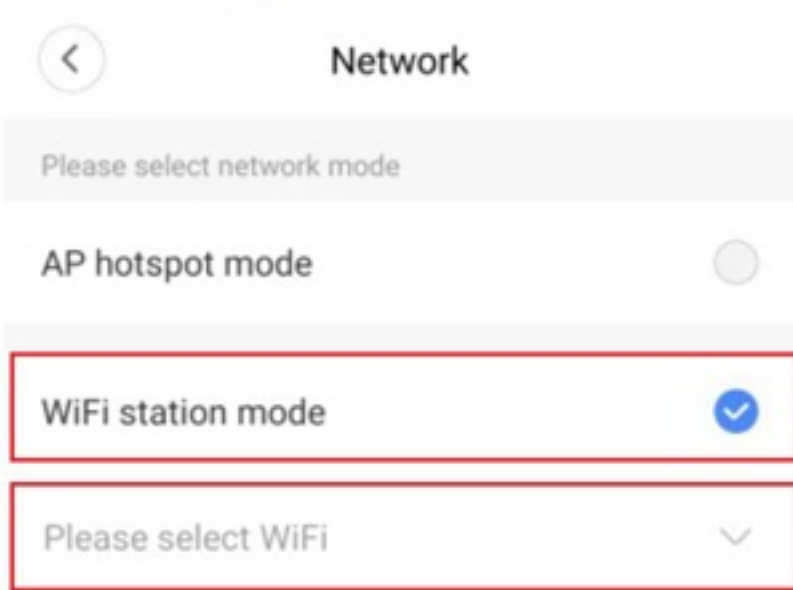
(achieve remote monitoring by connecting to the router Wi-Fi)

Note: To ensure signal stability, the distance between the camera and the router should not exceed 10m.

- 1.Tap the “ ”symbol then Settings



- 3.Tap “WiFi station mode”.



- 4. Tap to select Wi-Fi, input and confirm the Wi-Fi password is correct. * Wi-Fi name need to be composed of numbers or letters, no use special symbols or languages.

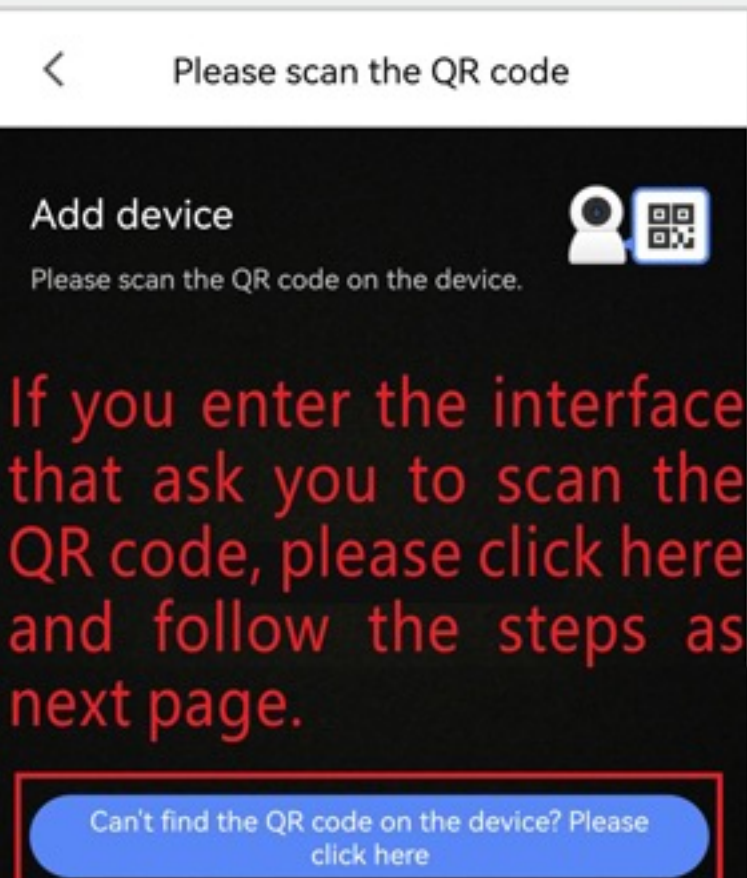
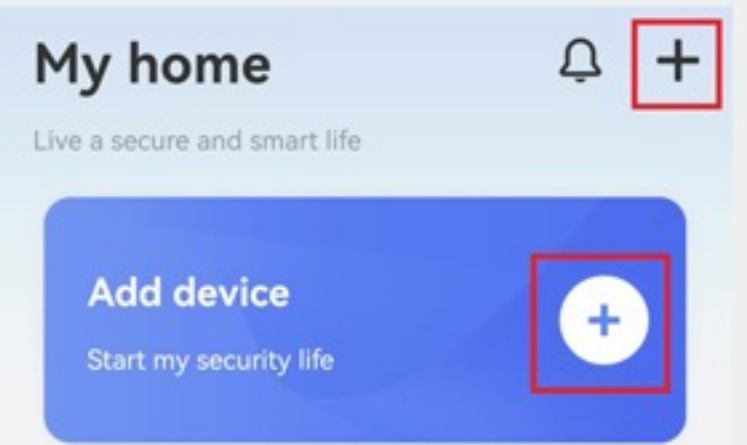
8



5.Tap Save, the camera blue light is flashing, indicating that the camera is connecting to the Wi-Fi network. When the blue light is on, indicating that the camera has successfully connected to the Wi-Fi network. Congratulation! You can remote monitoring now.

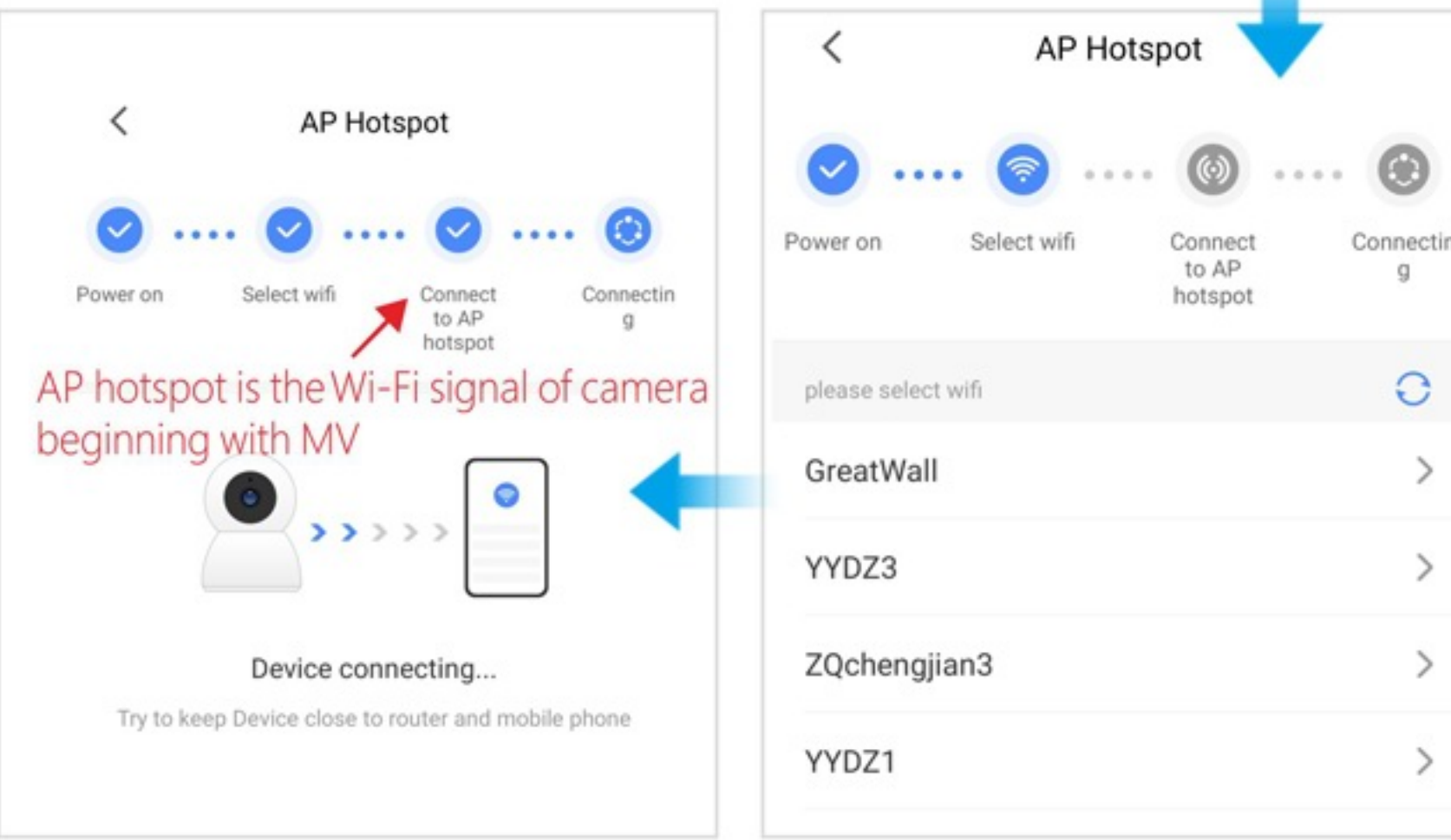
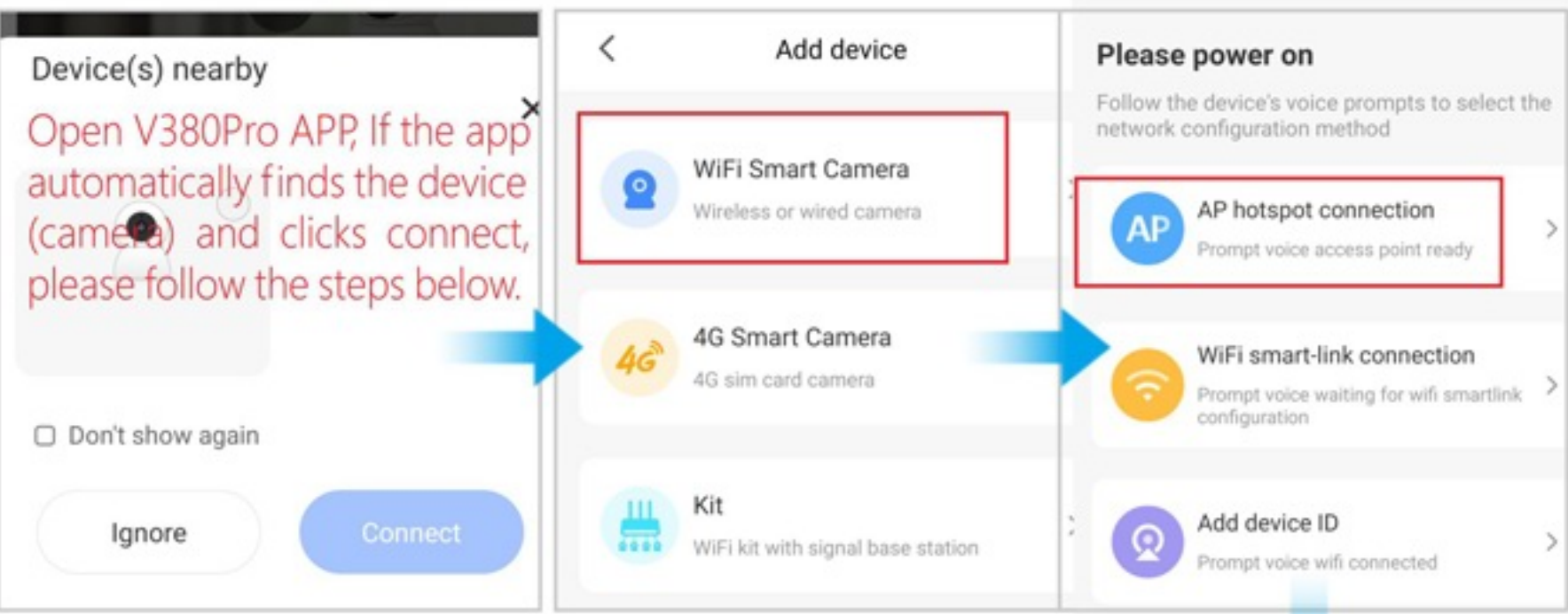
* If the light turns red, it means that the connection has failed. Please check the Wi-Fi name and password, and make sure the camera can receive strong and stable Wi-Fi signal.

Alternative methods of connecting remote mode



If you enter the interface that ask you to scan the QR code, please click here and follow the steps as next page.

9



10

IV.FAQ

Q: How to insert or remove a TFcard?

A: insert the TF card in the correct direction and push it into the slot.If you hear a click,it means the insertion is successful.To remove the TF card ,push it inwards to eject and take it out.



1.insert TF card into the slot

2.Use the tip of fingernail to push it in

Successful installation



Wrong

Using your finger to push it horizontally



unsuccessful installation

11



Remove a TFcard

Use the tip of fingernail to push the Tfcard inwards to eject and take it out.

Q: How to reset the camera?



A: Power on, insert a needle or a toothpick into the reset hole, press the button inside (about 3 seconds) until the red and blue indicators turn on at the same time to complete the reset operation.

Reset hole

* After reset, the device will be restored to factory settings. Connection needs to be set up again!

Q: V380Pro account and cloud storage

A: One V380Pro account can be connected to unlimited number of cameras, but one camera only supports one cloud storage. V380Pro account can be logged in on any other mobile phones.

12

Q: I have set up remote monitoring. Why the APP appears offline when i go out?

A: When the network is switched or disconnected and reconnected on the mobile phone, the APP will disconnect from the camera and display offline. Please swipe down to refresh the devices in the APP or restart the APP.

Q: Why the remote monitoring is not smooth?

A: Please ensure that the network signal at the installation location is working well and ensure the camera can receive strong and stable Wi-Fi signals.

(The product does not support 5G Wi-Fi network)

Q: How to save the video?

A: You can save the video content on the memory card. If cloud storage is enabled, you can save the video directly to cloud storage.

13

Q: How to play the video?

A:The video stored on the TF card can be viewed on the computer through the card reader, or directly through the V380 Pro APP, the video stored on the cloud storage can be directly downloaded and viewed through the V380 Pro APP.

Q: Why the video cannot be saved on the memory card?

A:The camera supports 8-128GB C10 TF card. Format the card or change a new TF card then try again.

Q: What should I do if i forget the password?

A: The only way is to reset the camera.

14